

REV K  
SH 1  
6230  
DWG NO.  
SIZE B

NOTES:

1. THIS IS A CAD GENERATED DRAWING. DO NOT REVISE MANUALLY.
2. ACCEPTABLE ALTERNATES. SEE TABULATION BLOCK.
3. REFERENCE: PROCESS SPECIFICATION 8110.
4. EFFECTIVITY: SN 9002 AND SUBSEQUENT

REVISIONS			
REV	DESCRIPTION	DATE	APPROVAL
A	EVAS INSTALLED IN SIDE COMPT.	1/22/2016	HEW
B	ADDED VELCRO VIEW, SHEET 4	7/8/2003	HEW
C	ADDED BACKING PLATE DIMENSIONS	1/28/2004	HEW
D	ADDED 'STC' TO MODEL; UPDATED 'USED ON' & 'TITLE' SECTIONS	8/26/2004	HEW
E	SHEET 4; ADDED VELCRO INSTRUCTION	9/4/2005	HEW
F	SHEET 5, ADDED ALTERNATE INSTRUCTIONS.	1/21/2006	HEW
G	REMOVED REFERENCED STATION NUMBERS	4/6/2006	HEW
H	ADDED ALTERNATE LOCATION	8/24/2007	HEW
I	SH 2&4 WERE 4; SH 3 WAS 5; SH 5 WAS 2; SH 6 WAS 3; ADDED VELCRO INST SHEET 3.	10/3/2007	JLH
J	UPDATED DRAWING FORMAT	5/31/2017	JA
K	CORRECTED PARTS LISTING; UPDATED PARTS CALLOUTS.	1/1/2018	JA

B

10	AR	AR	9507	EPOXY		2
9	1	1	9261-3-40	LOOP FASTENER		
8	2	2	MS21043-3	NUT		
7	2	2	AN960-10L	WASHER		
6	2	2	MS51958-60	SCREW, 10-32		
5	2	2	FABRICATE LOCALLY	BACKING PLATE	SEE SHEET 7	
4		1	107STC-192	EVAS, RIGHT		4
3	1		107STC-191	EVAS, LEFT		4
2		-2		INSTALL, EVAS, RH		
1		-1		INSTALL, EVAS, LH		
ITEM NO.	QTY		PART OR IDENTIFYING NO.	NOMENCLATURE OR DESCRIPTION	MATERIAL SPECIFICATION	NOTES

A

ITEM NO. REF	ALTERNATE PART NO.	DESCRIPTION	MANUFACTURER
8	EC-1357	CONTACT ADHESIVE	3M

 ACCEPTABLE ALTERNATES

PROPRIETARY, NON-DISCLOSURE AND TRADE SECRETS NOTICE Information contained here-in is proprietary to VisionSafe Corporation (VisionSafe) and shall not be reproduced or disclosed in whole or in part or used for any design or manufacture except when user possesses direct, written authorization from VisionSafe. Further, this document being provided to the Federal Aviation Administration (FAA) is the property of VisionSafe and constitutes trade secrets for the purpose of the Trade Secrets and Freedom of Information Act. Disclosure to any party for any reason without written VisionSafe permission is prohibited, except that disclosure may be made only within the FAA organization consistent with the need to evaluate VisionSafe technical data. EVAS® is a registered trademark of VisionSafe Corporation.

		MDL 206	
NEXT ASSY		USED ON	
APPLICATION			

PARTS LIST			
UNLESS OTHERWISE SPECIFIED DIMENSIONS ARE IN INCHES, TOLERANCES ARE: FRACTIONS DECIMALS ANGLES ± .XX ±.030 ±1° ± .XXX ±.010		VISIONSAFE CORPORATION P.O.Box 5011,Kaneohe,HI 96744-9011 (USA)	
MATERIAL		APPROVALS	DATE
FINISH		DRAWN HEW	8/8/2001
DO NOT SCALE DRAWING		APPRVD	
SCALE	LOCATION	DRG.NO.	REV
NONE	623000K	6230	K
SHEET		1 of 7	

A

# PRIMARY INSTALLATION

BL  
0.0  
REF

CO-PILOT SEAT  
REF

16.1  
INSTALLATION ZONE

-2 INSTALL, RH EVAS

PILOT SEAT  
REF

16.1  
INSTALLATION ZONE

-1 INSTALL, LH EVAS

C

B

B

A

A

B

A

PROPRIETARY, NON-DISCLOSURE, AND TRADE SECRETS NOTICE.  
SEE SHEET 1.

SIZE B	DRG.NO. <b>6230</b>	REV K
SCALE NONE	LOCATION 623000K	SHEET 2 of 7

# ALTERNATE INSTALLATION

BL  
0.0  
REF

CO-PILOT SEAT  
REF

-2 INSTALL, RH EVAS

PILOT SEAT  
REF

-1 INSTALL, LH EVAS

C

D

D

I

I

E

E

PROPRIETARY, NON-DISCLOSURE, AND TRADE SECRETS NOTICE.  
SEE SHEET 1.

SIZE B	DRG.NO. <b>6230</b>	REV K
SCALE NONE	LOCATION 623000K	SHEET 3 of 7

2

1

REV  
SH  
K  
4

DWG NO.  
6230

SIZE  
B

B

A

B

A

LBL  
19.0  
REF

FS  
234.5  
+32.0  
REF

10 2 PLACES 3

4.0 REF

2.5 REF

PANEL, GLARESHIELD  
REF

PILOT SEAT  
REF

C/L THROUGH PILOT SEAT &  
CONTROL COLUMN  
REF

**DETAIL C**  
LH SHOWN  
RH OPPOSITE

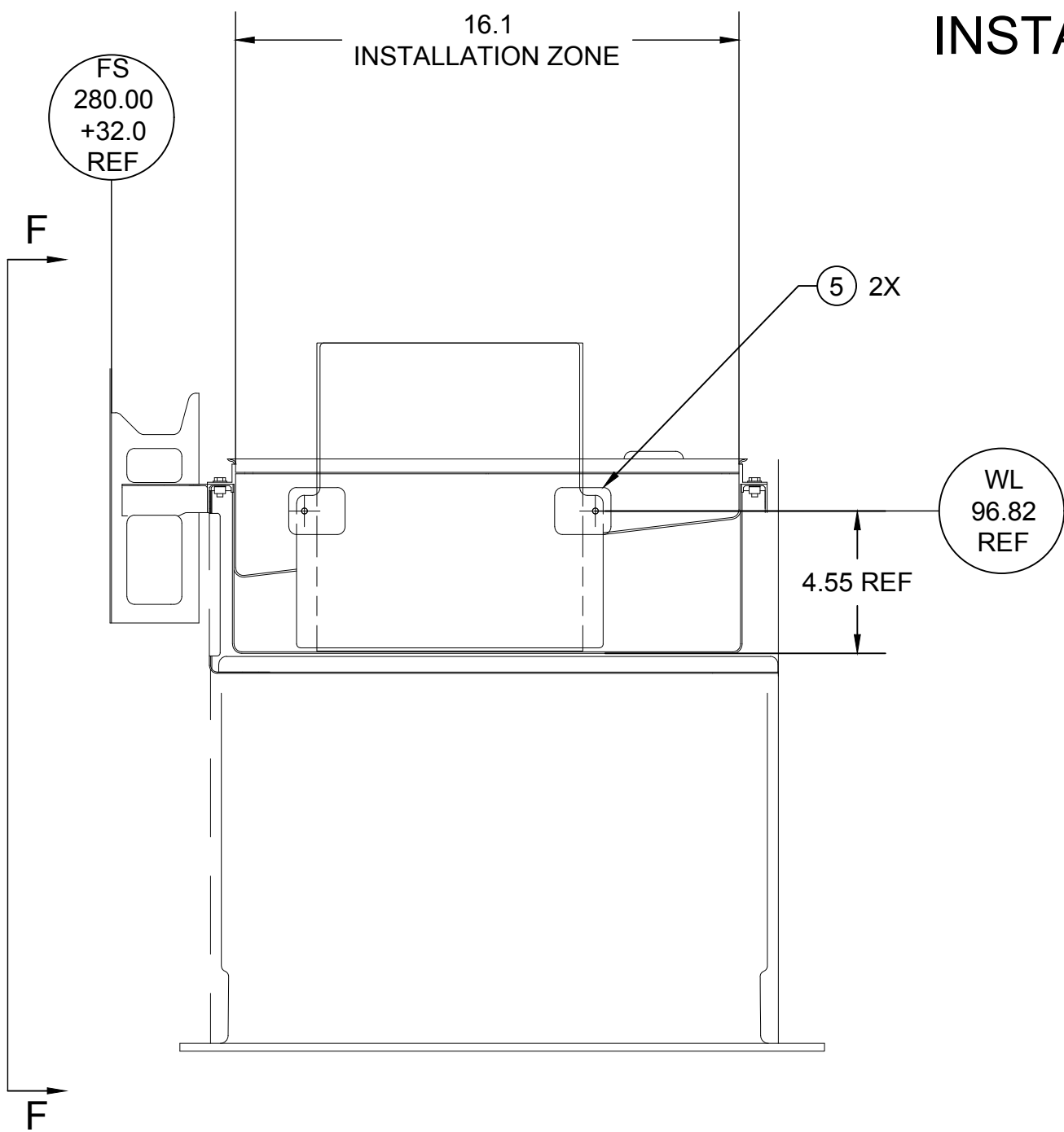
PROPRIETARY, NON-DISCLOSURE, AND TRADE SECRETS NOTICE.  
SEE SHEET 1.

SIZE B	DRG.NO. <b>6230</b>	REV K
SCALE NONE	LOCATION 623000K	SHEET 4 of 7

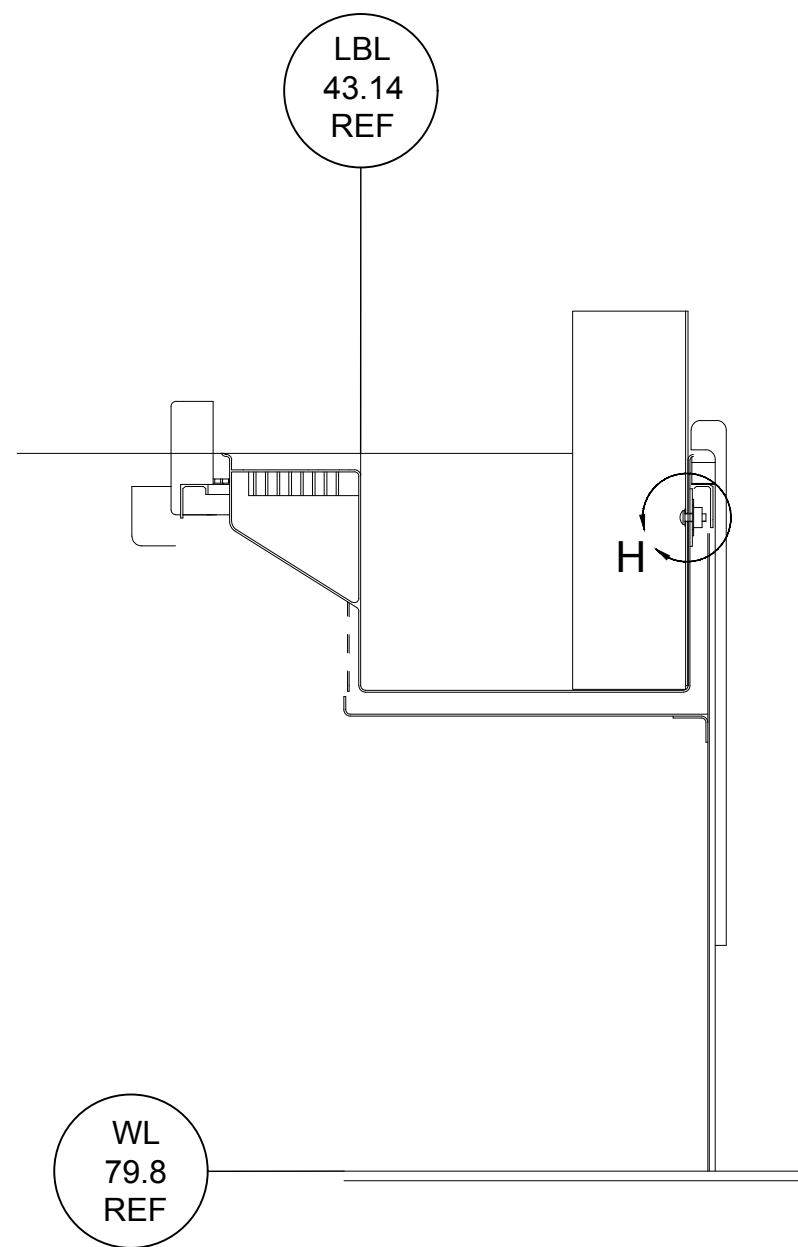
2

1

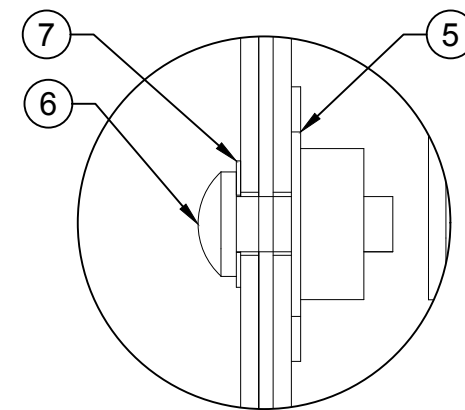
# PRIMARY INSTALLATION



VIEW A-A (-1 INSTL SHOWN)  
VIEW B-B (-2 INSTL OPPOSITE)



VIEW F-F  
LH SHOWN RH OPPOSITE



DETAIL H  
2 PLACES

B

A

PROPRIETARY, NON-DISCLOSURE, AND TRADE SECRETS NOTICE.  
SEE SHEET 1.

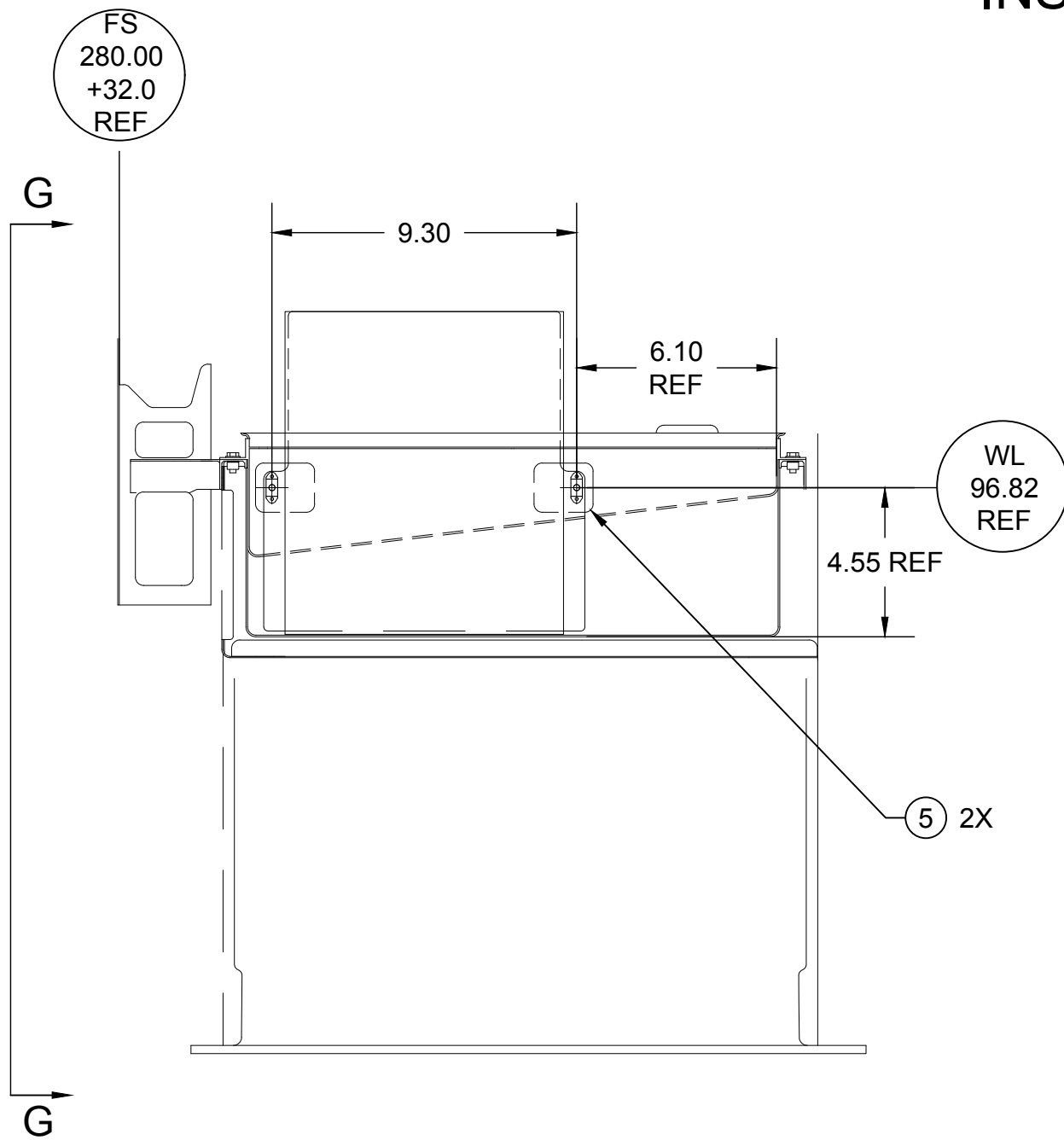
SIZE B	DRG.NO. <b>6230</b>	REV K
SCALE NONE	LOCATION 623000K	SHEET 5 of 7

# ALTERNATE INSTALLATION

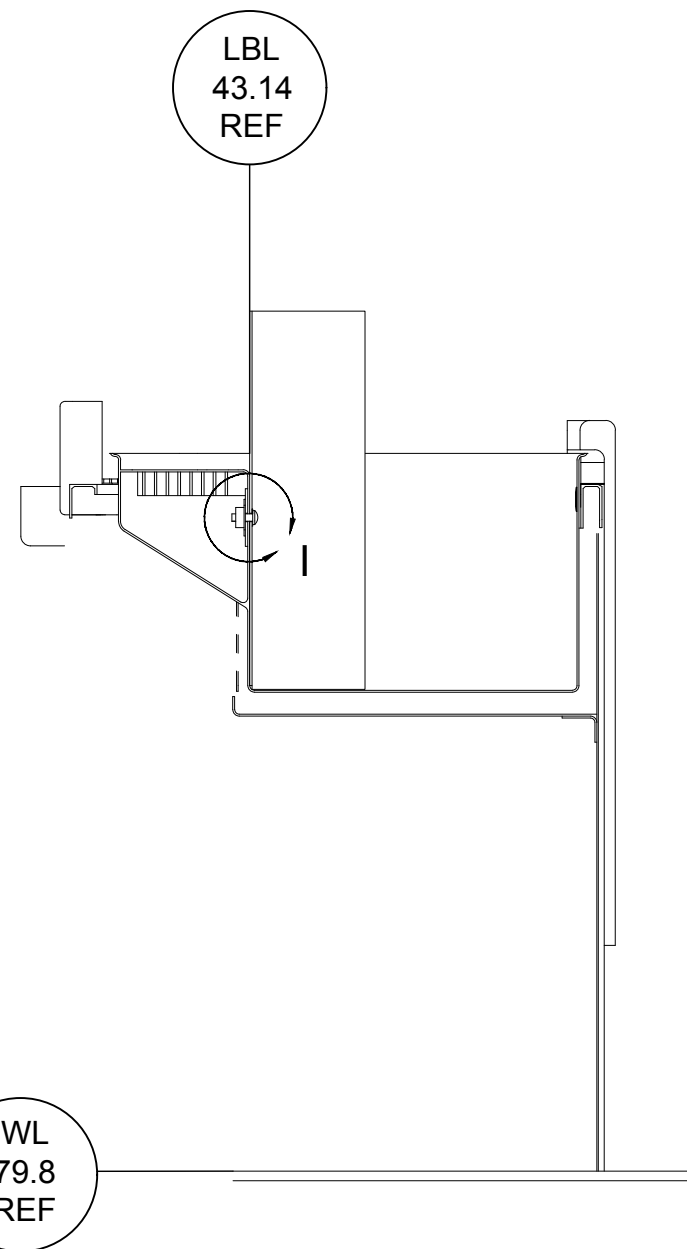
REV K  
SH 6  
6230  
DWG NO.  
SIZE B

B

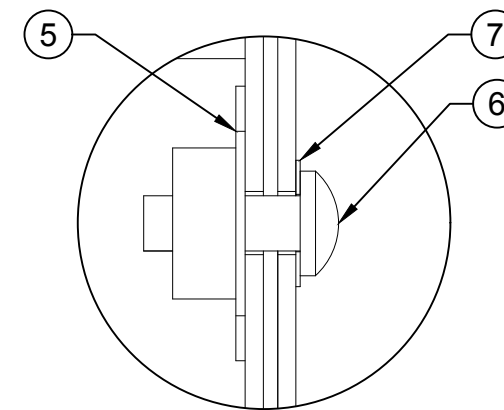
A



VIEW D-D (-1 INSTL SHOWN)  
VIEW E-E (-2 INSTL OPPOSITE)



VIEW G-G  
LH SHOWN RH OPPOSITE



DETAIL I  
2 PLACES

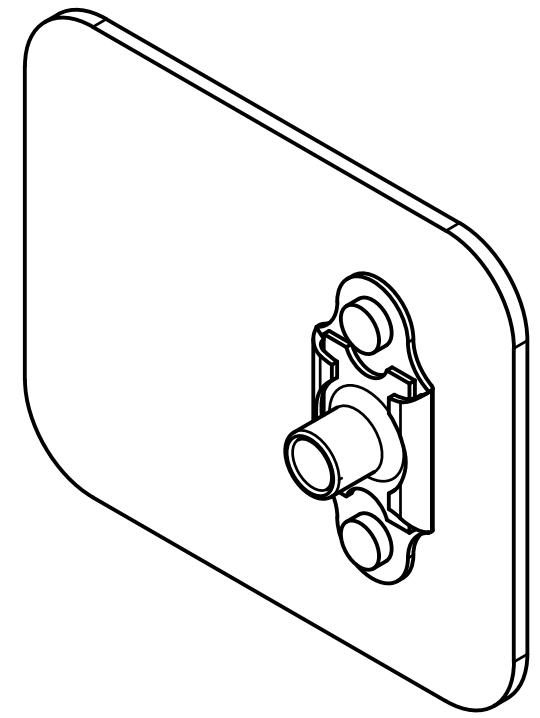
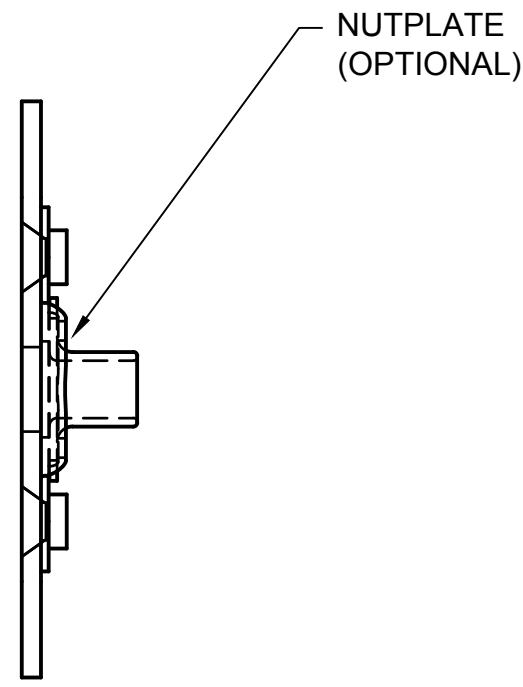
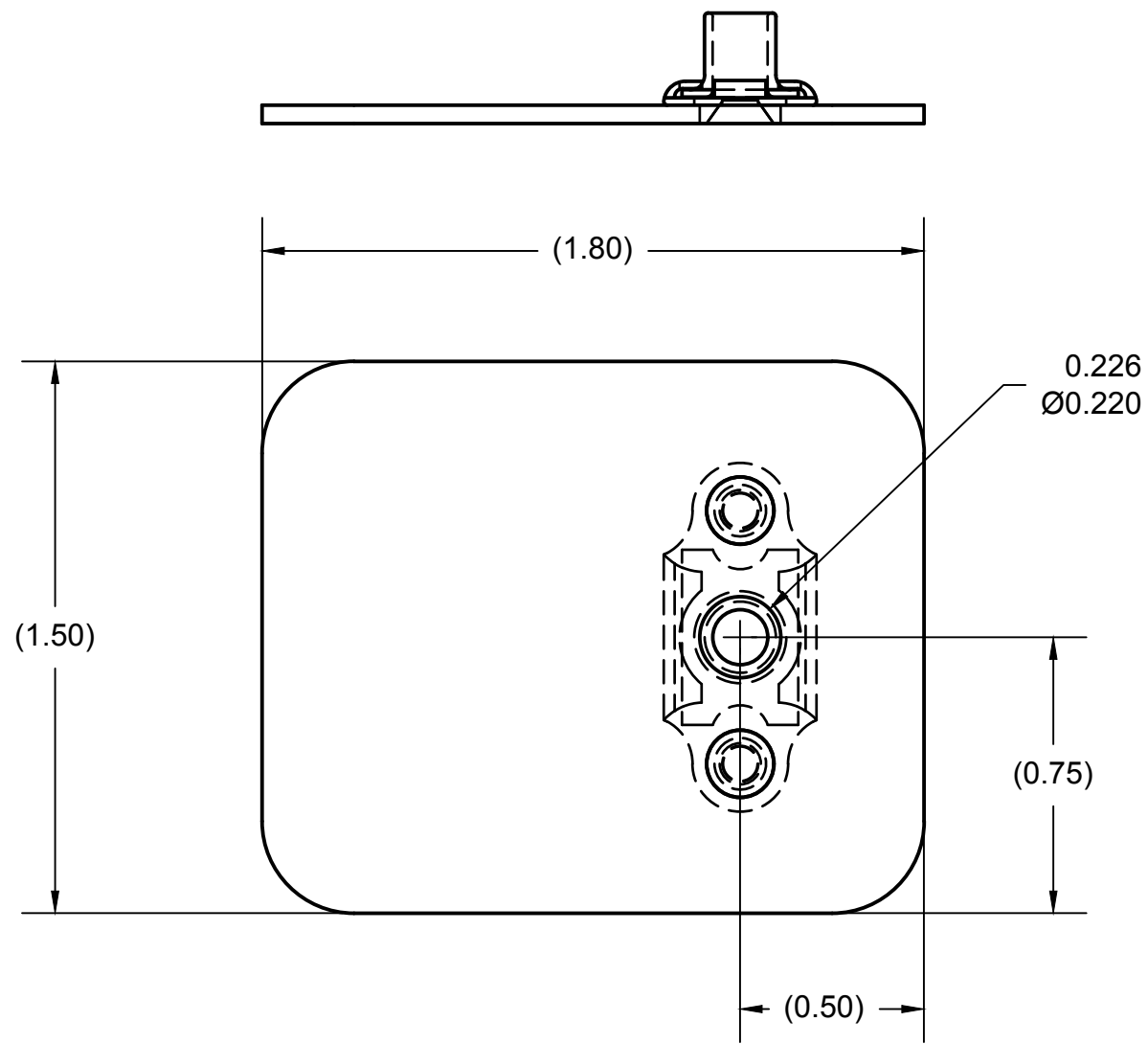
B

A

PROPRIETARY, NON-DISCLOSURE, AND TRADE SECRETS NOTICE.  
SEE SHEET 1.

SIZE B	DRG.NO. <b>6230</b>	REV K
SCALE NONE	LOCATION 623000K	SHEET 6 of 7

REV K  
SH 7  
6230  
DWG NO.  
SIZE B



**BACKING PLATE SPECIFICATION**  
**MATERIAL: 2024 T3 (OR EQUIVALENT)**  
**THICKNESS: .050 (MINIMUM)**

PROPRIETARY, NON-DISCLOSURE, AND TRADE SECRETS NOTICE.  
 SEE SHEET 1.

SIZE B	DRG.NO. <b>6230</b>	REV K
SCALE NONE	LOCATION 623000K	SHEET 7 of 7

B

B

A

A