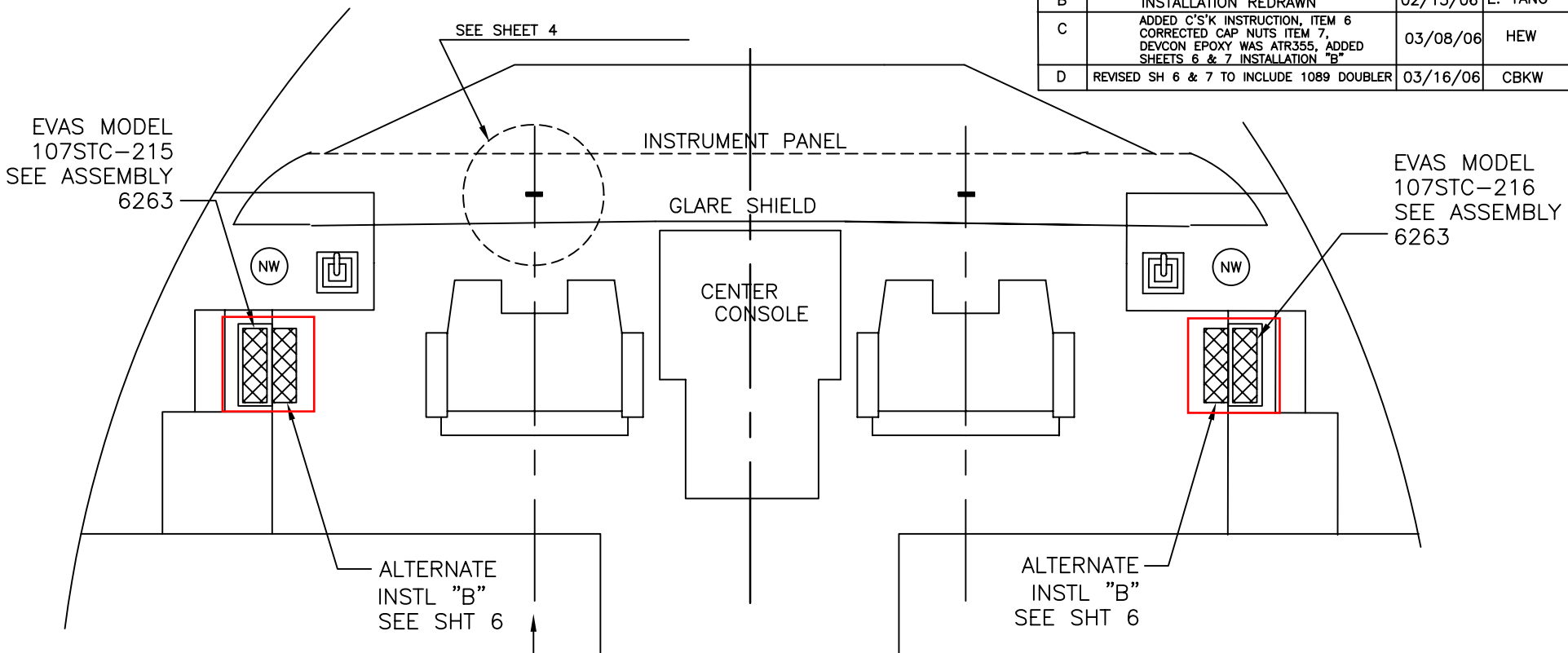


2

1

REVISIONS			
REV.	DESCRIPTION	DATE	APPROVAL
A	INSTALLATION REDRAWN	07/27/04	HEW
B	INSTALLATION REDRAWN	02/13/06	E. YANG
C	ADDED C'S'K INSTRUCTION, ITEM 6 CORRECTED CAP NUTS ITEM 7, DEVCON EPOXY WAS ATR355, ADDED SHEETS 6 & 7 INSTALLATION "B"	03/08/06	HEW
D	REVISED SH 6 & 7 TO INCLUDE 1089 DOUBLER	03/16/06	CBKW



Contact Vision Safe Corporation if any deviation from the approved drawings in EVAS location or installation is needed.

	VISIONSAFE MDL 222
END	AIRBUS
NEXT ASSY	USED IN
APPLICATION	

ITEM NO.	QTY REQ'D	FSCM NO.	PART OR IDENTIFYING NO.	NOMENCLATURE OR DESCRIPTION	MATERIAL SPECIFICATION	NOTE
PARTS LIST						
UNLESS OTHERWISE SPECIFIED DIMENSIONS ARE IN INCHES, TOLERANCES ARE: FRACTIONS DECIMALS ANGLES * .XX± ±				CONTRACT NO.	VISION SAFE CORPORATION P.O.Box 5011,Kaneohe,HI 96744-5011 (USA)	
MATERIAL				APPROVALS	DATE	EVAS 107STC-215 & -216 INSTALLATION: VARIOUS AIRBUS
FINISH				DRAWN HEW	07/30/03	
APPLICATION				CHECKED		
DO NOT SCALE DRAWING				ENGRG		SIZE B
				Q.A.		FSCM NO. 6264
						DRG.NO. 6264
						LOCATION 6264001D
						SHEET 1 of 7

2

1

REV 1 D

SH 1 D
SIZE DWG NO. 6264
B

B

A

B

A